



# COSMOS

## TECHNICAL ASPECT

Construction: TIP SHEAR

Composition: 100% Recycled Nylon

Secondary Backing: Jute and Latex

Pattern Repeat: Random

Pile Height: 9.0mm

Total Height: 11.0mm

Pile Weight: 1.900g/m<sup>2</sup>

Total Weight: 2.800g/m<sup>2</sup>

Roll Width: 400cm

Use: Medium Commercial/ Heavy Residential



Level 1, 68 Sophia Street  
Surry Hills, NSW 2010

1800 239 237 (1800 2FYBER)  
info@fyber.com.au  
@fyber\_flooring

www.fyber.com.au

**FYBER**



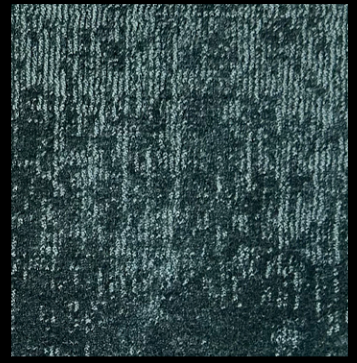
102 BLOSSOM



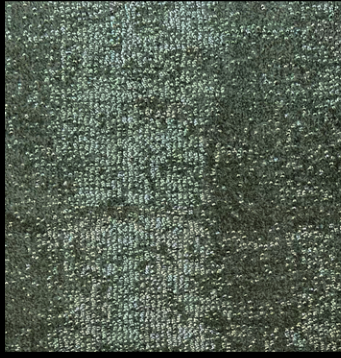
900 BRONZE



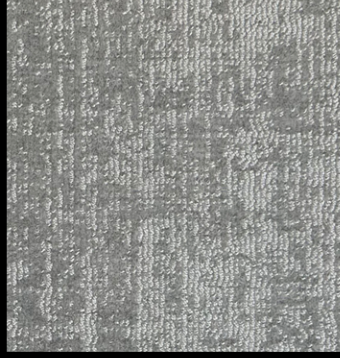
879 CHARCOAL



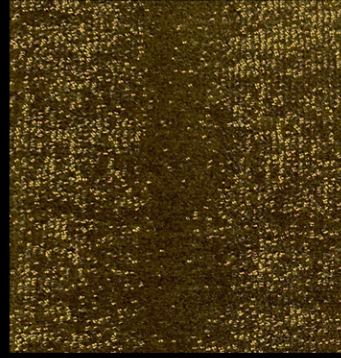
899 EMERALD



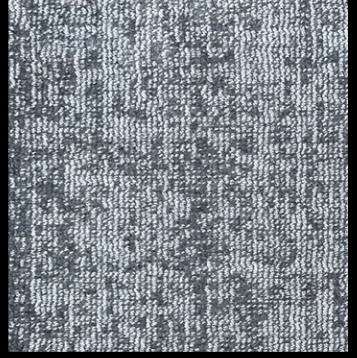
184 FANGO



901 ICE



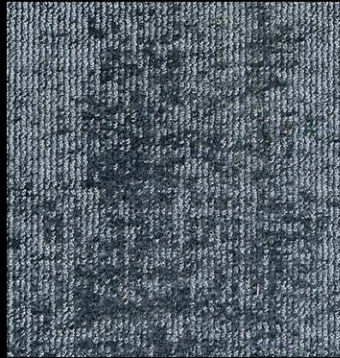
894 MOSS



902 PLATINUM



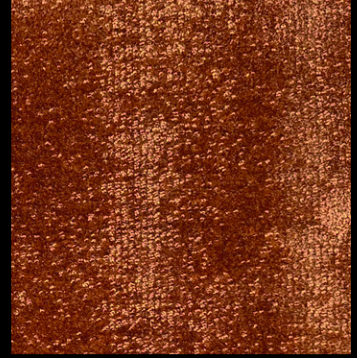
904 RUBY



905 SAPPHIRE



903 SILVER



893 TERRACOTTA



906 VANILLA

# MADE WITH RECYCLED NYLON: USING RECOVERED FISHING NETS



This collection is created using pre-consumer and post-consumer nylon waste including carpets and ghost nets recovered from the world's oceans and marine industries. In selecting this special fibre, which can be regenerated an infinite number of times, Fyber continues to work with premium raw materials that are sustainable and therefore play an important role in the future of our earth.

Key characteristics of our recycled nylon are the following:

- **Environmentally friendly:** Made from 100% regenerated and regenerable nylon from pre- & post-consumer waste, such as production discards, industrial plastic components and recovered fishing nets.
- **Easy maintenance:** The specially engineered cross-sectional fibre profile minimises soil adhesion and the incorporation of de-lustering agents in the production process reduces soil visibility in use, without the need for specialist cleaning products, making it a great choice in soft commercial applications such as hotel bedrooms.
- **Soft touch with zero fibre loss:** Incorporating the high performance benefits of a nylon fibre, our carpets are soft and delicate to the touch, with a silk like feel. Thanks to its continuous filament fibres, there is no loss or shedding of yarn from the pile surface.
- **Lustrous appearance:** The characteristics of this revolutionary fibre reflect light giving the carpet surface a delicate random shimmering appearance, which is highly desirable in modern contemporary interiors.

## HOW IS THIS COLLECTION MANUFACTURED?

1. **RECOVER:** The journey starts with our yarn partners rescuing nylon waste like fishing nets, fabric scraps, carpet flooring and industrial plastic from landfills and oceans all over the world.

2. **REGENERATE:** This rescued waste is then sorted and cleaned to ensure the maximum recovery of re-usable nylon. Using the latest industrial technology, the nylon is then re-processed back to its original pure form as nylon chips. These nylon chips are then converted into a new continuous filament fibre, suitable for carpet manufacture.

3. **WEAVE:** The yarn is processed into bobbins and woven into carpet by our artisans in Spain, using traditional wilton looms powered by solar generated green energy, ensuring our whole production process is ecologically responsible.

### ECO FACTS

FOR EVERY 10,000 TONS OF RAW MATERIAL, IT IS POSSIBLE TO:

Save 70,000  
barrels of  
crude oil



Avoid 57,100  
tonnes of CO<sub>2</sub>  
eq. emissions

