



# KONTOR TEXTILES

## TECHNICAL ASPECT

Construction: Woven Loop Pile

Composition: 100% PA 6.6 Ascend Ultron

Secondary Backing: TEXTiles

Stitches per m<sup>2</sup>: 168.000m<sup>2</sup>

Total Height: 5.00mm

Pile Weight: 415g/m<sup>2</sup>

Total Weight: 3.100g/m<sup>2</sup>

Dimensions: 50x50cm (tiles per box = 5m<sup>2</sup>)

Use: Commercial Heavy



Installation:

Square



Quarter turn

Level 1, 68 Sophia Street  
Surry Hills, NSW 2010

1800 239 237 (1800 2FYBER)  
info@fyber.com.au  
@fyber\_flooring

www.fyber.com.au

# FYBER

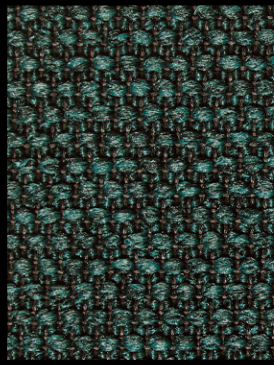




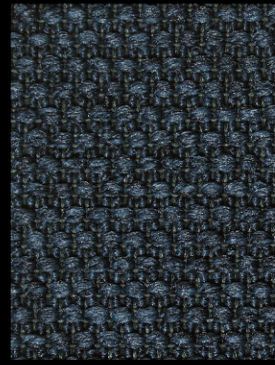
AMBER GOLD  
377480



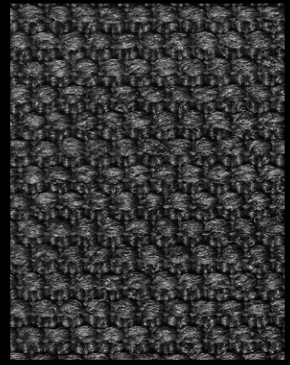
ANTHRACITE  
377380



BAYBERRY  
377780



BLUE NIGHTS  
377880



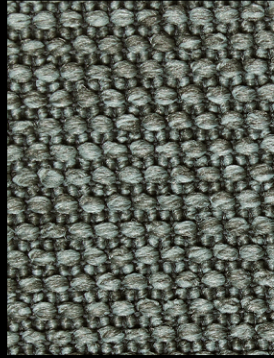
CHARCOAL GREY  
377370



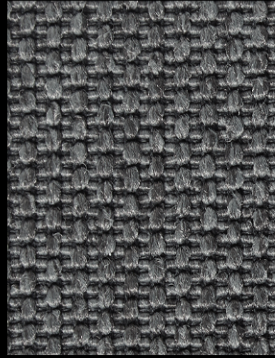
COBBLESTONE  
377200



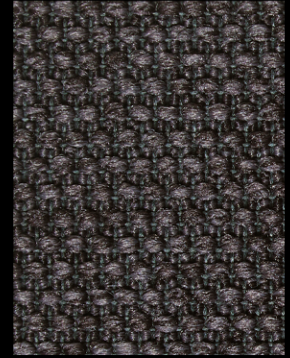
CYPRESS  
377760



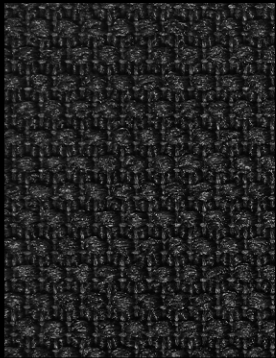
FLINT GREY  
377300



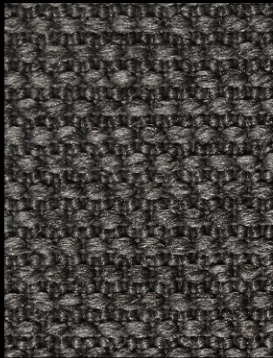
FROST GREY  
377320



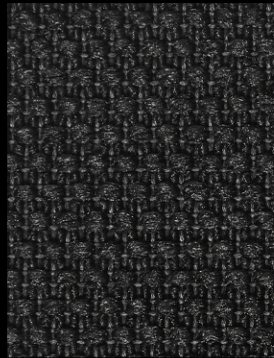
ITALIAN PLUM  
377680



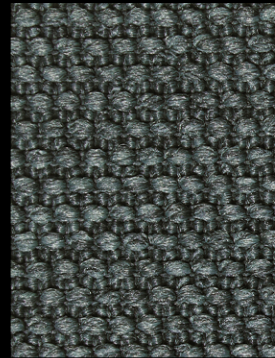
JET BLACK  
377395



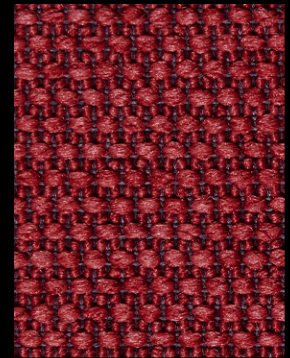
PEWTER  
377340



RAVEN  
377390



STEEL GREY  
377350



TANGO RED  
377600



TWILL  
377150



WALNUT  
377250