



NORSE LOCK-TILES

TECHNICAL ASPECT

Construction: Woven Loop Pile
Composition: 100% PA 6.6 Ascend Ultron
Secondary Backing: TEXTiles
Stitches per m²: 156.000m²
Total Height: 5.00mm
Pile Weight: 550g/m²
Total Weight: 3.000g/m²
Dimensions: 50x50cm (tiles per box 5m²)
Use: Commercial Heavy



Installation:

LockTiles®



Produced to order only

Level 1, 68 Sophia Street
Surry Hills, NSW 2010

1800 239 237 (1800 2FYBER)
info@fyber.com.au
@fyber_flooring

www.fyber.com.au

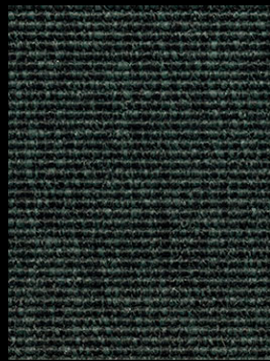
FYBER



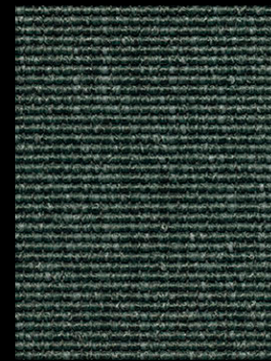
BLACK
394390



BLUE NIGHTS
394890



CASTLEROCK
394360



CHARCOAL GREY
394340



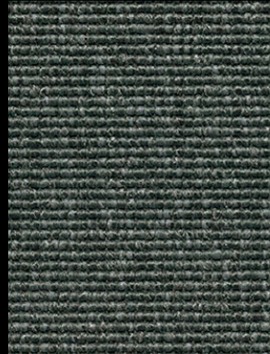
COBBLESTONE
394120



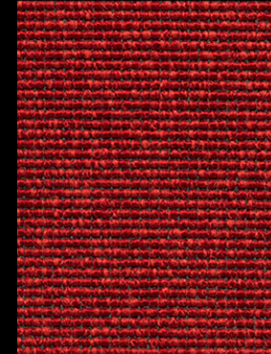
COCO BROWN
394250



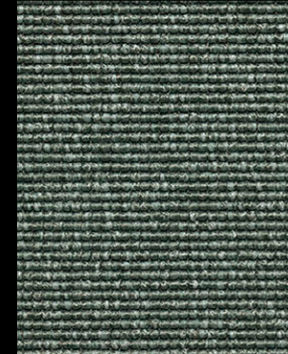
DEEP BLACK
394395



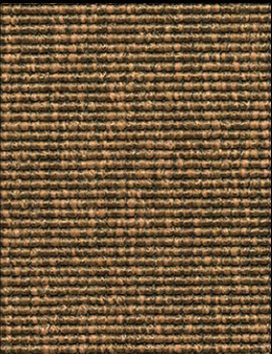
FROST GREY
394320



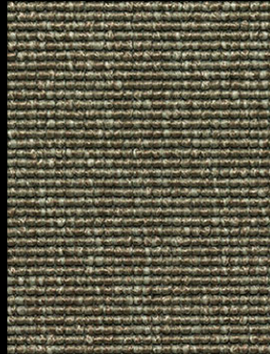
JESTER RED
394600



NEUTRAL GREY
394300



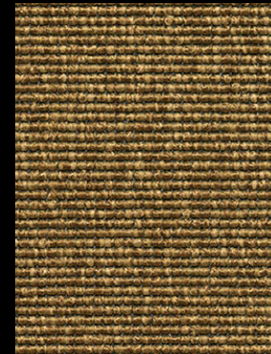
NOUGAT
394220



PLAZA TAUPE
394100



RAISIN
394680



SAND
394240



SEAL BROWN
394290



SIMPLE TAUPE
394150



STEEL GREY
394350



WARM BEIGE
394200