



NORSE

TECHNICAL ASPECT

Construction: Woven Loop Pile

Composition: 100% PA 6.6 Ascend Ultron

Secondary Backing: textile (action bac) / Felt (silent Bac)

Stitches per m²: 156.000m²

Total Height: 3.50/ 4.50mm

Pile Weight: 550g/m²

Total Weight: 1.900/ 2.300g/m²

Roll Width: 400cm

Use: Commercial Heavy



Level 1, 68 Sophia Street
Surry Hills, NSW 2010

1800 239 237 (1800 2FYBER)
info@fyber.com.au
@fyber_flooring

www.fyber.com.au

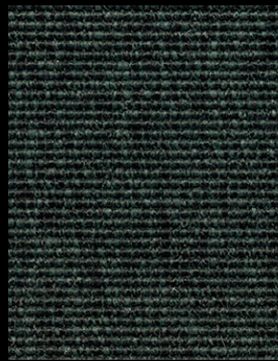
FYBER



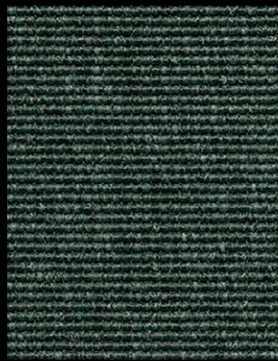
BLACK
394390



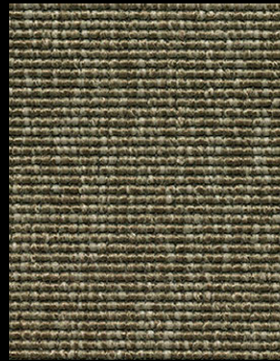
BLUE NIGHTS
394890



CASTLEROCK
394360



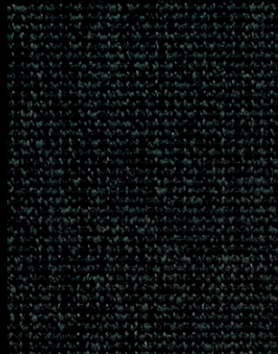
CHARCOAL GREY
394340



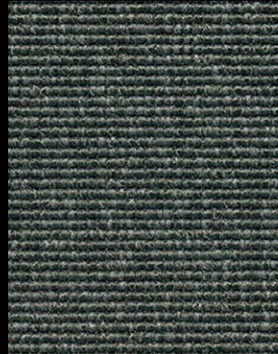
COBBLESTONE
394120



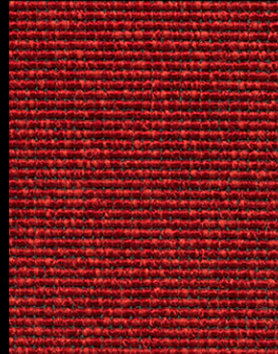
COCO BROWN
394250



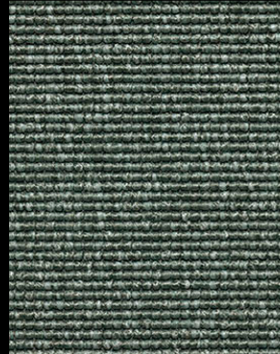
DEEP BLACK
394395



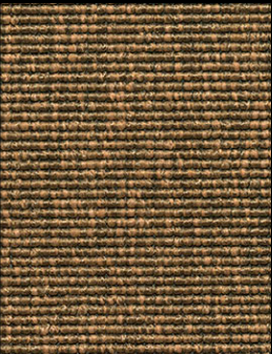
FROST GREY
394320



JESTER RED
394600



NEUTRAL GREY
394300



NOUGAT
394220



PLAZA TAUPE
394100



RAISIN
394680



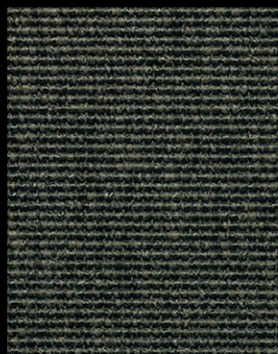
SAND
394240



SEAL BROWN
394290



SIMPLE TAUPE
394150



STEEL GREY
394350



WARM BEIGE
394200